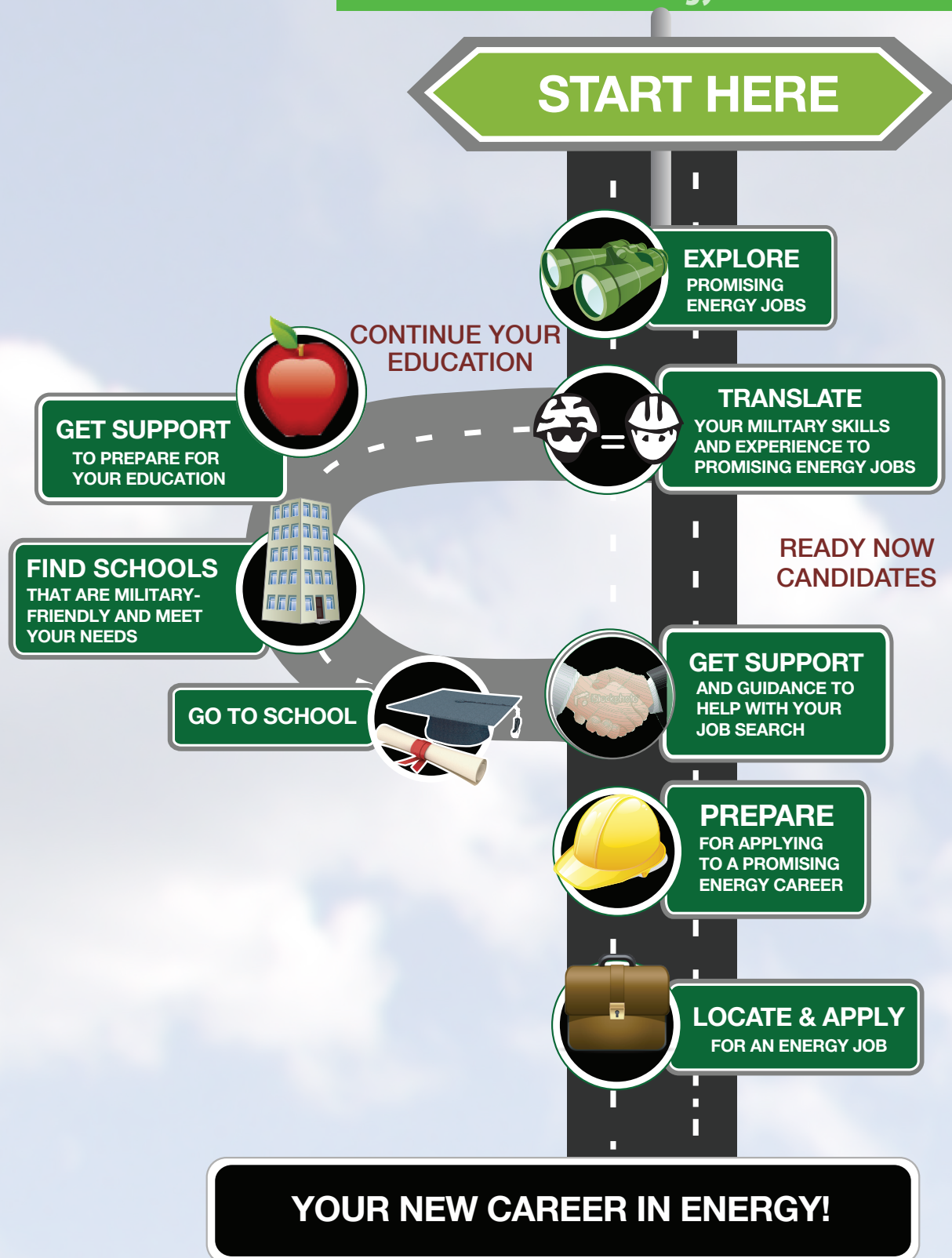


# VETERAN FACT SHEET

## Navy Enlisted Ratings (Occupations) Energy Technicians



To get additional information on the Roadmap and how  
to find an energy job, go to the Troops to Energy Jobs website:  
**[www.troopstoenergyjobs.com](http://www.troopstoenergyjobs.com)**

# VETERAN FACT SHEET

<b>SPECIALIZATION</b> Relevant Military Training	<b>COMPARABLE ENERGY JOBS</b>	<b>TYPICAL UTILITY TITLES</b>	<b>JOB RESPONSIBILITIES</b>
<b>AD-Aviation Machinist's Mate</b> <b>AS-Aviation Support Equipment Technician</b> <b>MUSE-Mobile Utilities Support Equipment Technician</b> <b>MR-Machinery Repairman</b> <b>GSE-Gas Turbine System Technician Electrical</b> <b>GSM-Gas Turbine System Technician Mechanical</b>	<b>Generation Technician - Mechanical</b>  <b>Generation Technician - Electrical</b>  <b>Auto &amp; Diesel Mechanic</b>	<b>MAINTENANCE MECHANIC</b>          <b>AUTO MECHANIC</b> <b>DIESEL TECHNICIAN</b>	<p>Assemble, repair, and test plant equipment such as turbines, pumps, compressors, fans, blowers, tanks, vessels, piping, valves, and structures; perform maintenance and repairs on equipment and machinery in accordance with blueprints, manuals, and established codes using hand tools, power tools, shop equipment, and test and analysis equipment; perform weld repair on equipment and structures</p> <p>Troubleshoot, maintain, and repair diesel engines using diagnostic tools and equipment; understand air and exhaust, fuel, coolant, and oil systems; understand diesel engine rebuild procedures</p>
<b>UT – Utilitiesman</b>	<b>Gas T&amp;D Technician</b>	<b>UTILITY MECHANIC</b> <b>GAS DISTRIBUTION MECHANIC</b> <b>GAS SERVICE SPECIALIST</b>	<p>Install and repair pipes for natural gas and/or water systems; connect pipe pieces and seal joints using welding and other equipment; grade or level trench bases using tamping machines or hand tools; dig trenches to desired or required depths by hand or using trenching tools; install, maintain, and repair heating, air conditioning, and ventilation systems</p>