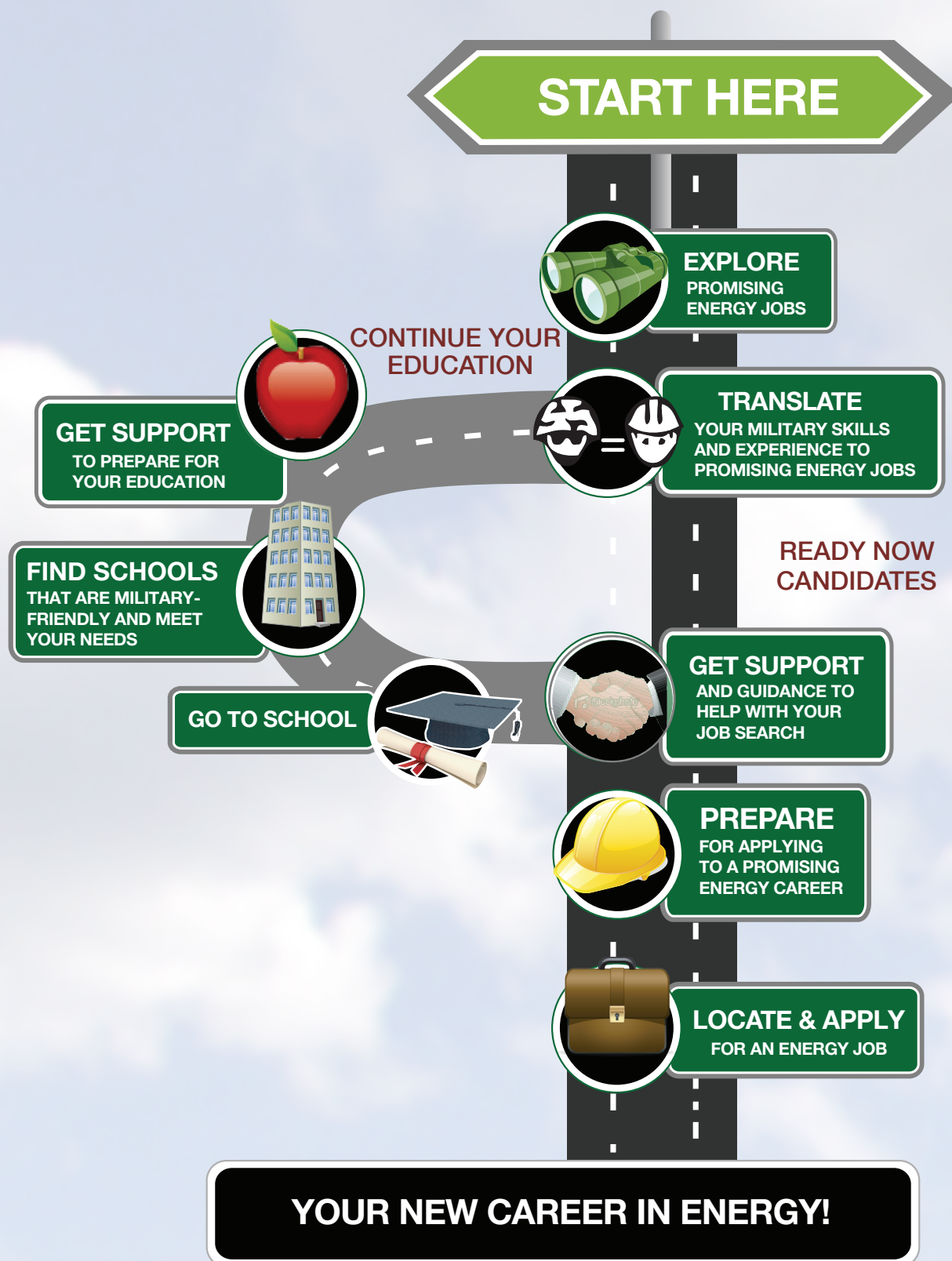


VETERAN FACT SHEET

Army MOS 12P – Prime Power Production Specialist



To get additional information on the Roadmap and how to find an energy job, go to the Troops to Energy Jobs website:
www.troopstoenergyjobs.com

VETERAN FACT SHEET

SPECIALIZATION Relevant Military Training	COMPARABLE ENERGY JOBS	TYPICAL UTILITY TITLES	JOB RESPONSIBILITIES
12P – PRIME POWER PRODUCTION SPECIALIST 12P20 Modules B through N	Power Plant Operator	POWER PLANT OPERATOR AUXILIARY EQUIPMENT OPERATOR	Power Plant Operator <ul style="list-style-type: none"> Inspect, operate, and monitor equipment used in the production of electricity Isolate/tag equipment for maintenance and valve operations
ASI-S2 – MECHANICAL SPECIALIST 12P20 Modules B through N ASI S2 Modules B through F	Generation Technician Electric T&D Technician Auto Mechanic	OPERATOR TRAINEE MAINTENANCE MECHANIC SUBSTATION MECHANIC ELECTRICAL EQUIPMENT SPECIALIST AUTO & DIESEL MECHANIC	Generation Technician MECHANICAL: <ul style="list-style-type: none"> Assemble, repair, and test plant equipment such as turbines, pumps, compressors, fans, blowers, tanks, vessels, piping, valves, and structures Perform maintenance and repairs on equipment and machinery in accordance with blueprints, manuals, and established codes using hand tools, power tools, shop equipment, and test and analysis equipment Perform weld repair on equipment and structures ELECTRICAL: <ul style="list-style-type: none"> Perform corrective, preventative, and predictive maintenance of all electric equipment in the plant Perform all facets of circuit testing, troubleshooting, and repair Assemble, repair, and test motors Perform electrical maintenance on low, medium, and high voltage AC/DC systems, circuits and motor control centers, load banks, transformers, generators, exciters, and heating & cooling equipment
ASI-S3 – ELECTRICAL SPECIALIST 12P20 Modules B through N ASI S3 Modules B through J	Generation Technician	ELECTRICIAN	Substation Electrician <ul style="list-style-type: none"> Install, maintain, and repair electrical equipment Interpret nameplate data and electrical diagrams Understand general functions and operations of substation apparatus Display the application of hoists, tackle, and equipment used in the stations Identify and properly use tools and equipment required for work
ASI-E5 – INSTRUMENTATION SPECIALIST 12P20 Modules B through N ASI E5 Modules B through H	Generation Technician Electric T&D Technician	INSTRUMENT & CONTROL TECHNICIAN RELAY TECHNICIAN SYSTEM PROTECTION TECHNICIAN	Relay/System Protection Technician <ul style="list-style-type: none"> Perform maintenance, installation, and corrective activities on system protection devices, control circuits, and metering and communication equipment (both data and PLC) Maintain and repair protective relay and control equipment
U4 – POWER LINE DISTRIBUTION 12P20 Modules B through N U4 Modules	Line Worker	LINE WORKER LINE HELPER UG UTILITY WORKER GROUNDSMAN	Line Worker Medium and low voltage cable splicing and termination; grounding; wiring methods; circuits and protection; voltage regulator circuits; climbing; single- and three-phase transformer connection configurations and safety; current and voltage transformers; protective relays; circuit breaker maintenance; and test equipment